

Mobile

SECURITY SOLUTION FOR MOBILE ENVIRONMENT



Mobile Video Surveillance & Vehicle Management System

Product Features

- Stand alone NON-PC embedded operating system (RTOS) provides maximum stability
- High Quality MPEG-4 video recording and playback at full frame rate (30 fps)
- Record up to 4 channels of high resolution video
- Record up to 4 channels of highly synchronized audio
- Built-in GPS allows for vehicle tracking and location recording in video field
- Time synchronization through GPS or NTP
- Small, low profile assembly includes a quick release mount that eliminates the need for a "vault" box
- Removable hard disk rack, provided the mobility to store the data to center system
- Optional WI-FI and Cellular Video Networking
- 6 "Alarm In" connections allow specific cameras to be put into record mode on receipt of an "Alarm In" signal
- USB port allows laptop connection to download & upload data
- Flash Card (CFC) can be used for software upgrades and uploading advertising clips to the MDR
- Full line of cameras and accessories for many mobile applications
- Works automatically when vehicle ignition is turned on
- Low power consumption



SYSTEM SPECIFICATIONS:

SYSTEM CONFIGURATION:

- OS.....Linux
- Operation Interface.....Hand-held, IR controller with On-Screen Display (OSD) for all operations of the MDVR
- Storage.....60, 80, 100, 120 and 160 (2.5-in. mobile anti-vibration and shock resistance HDD support)
- Signal System.....NTSC/PAL
- Input Voltage.....12-volt DC or 24-volt DC (can range from 7v ~ 28v DC)

VIDEO:

- Camera Input.....up to 4 cameras
- Output.....2 Analog and 1 VGA
- Display.....4 Video Windows Screen
- Image Quality.....8 - Level Adjustable
- Fwd/Playback speed.....x2, x4, x1/2, x1/4
- Stream Standard.....CIF(352x288 pixels for NTSC, 360x240 pixels for PAL), 1/2D1(704x288 pixels for NTSC, 720 x 240 pixels for PAL)
- Image Compression.....12.5K-112.5KB/s, 25K-150KB/s
- Max FPS.....60FPS, 15 fps/ch
- Display Res.....TV monitor 704x576 / 720x480 pixels (D1), VGA output 720x576 / 720x480 pixels (D1)

AUDIO:

- Audio Input4 (stereo)
- Audio Output1 (stereo)

ALARM:

- InputUp to 8 sensor inputs (analog/ digital)
- Multi-mode.....Auto-reset after power-break, auto-alarm when missing signal input

NETWORK INTERFACE:

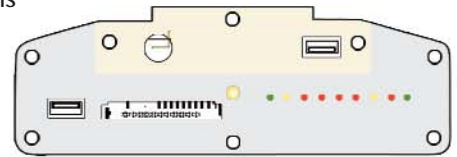
- Serial Interface.....RS485, RS232
- Network Interface.....RJ-45 10M / 100M Ethernet connector
- Network Transport Protocol....TCP / IP

OTHERS:

- External Notebook PC.....HDD Bay --1 IDE HDD, FAT32 format
- Storage Mode.....2.5" HDD
- Time Clock.....Built-in clock, Perpetual calendar
- Data R/W mode.....FIFO
- Operating Temp.....0-50° C
- Humidity.....(+ -) 80%
- USB.....Connection to PC

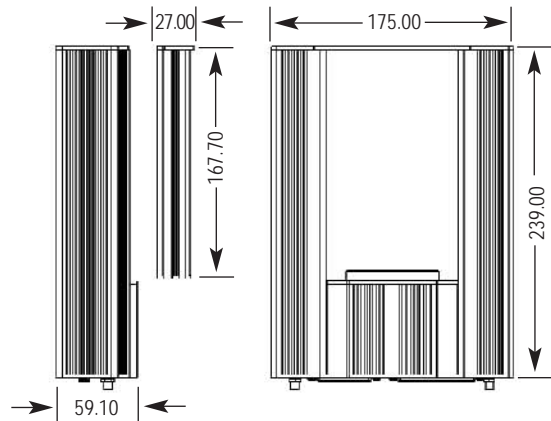
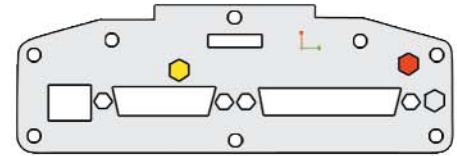
Assembled Chassis Details

- Height - 59.10mm/2.3in
- Width-175.00mm/6.9in
- Depth-239.00mm/ 9.4in
- Weight-3500g/7.71p
- Depth-239.00mm/9.4in

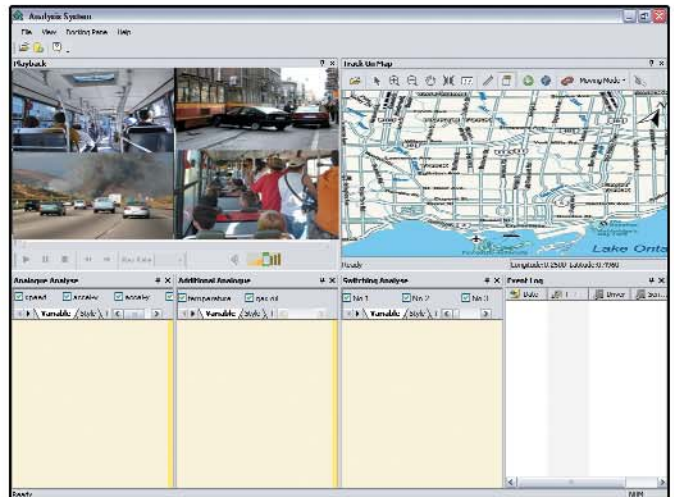


Removable HDD Module

- Height-27.00mm/1.06in
- Width-110.00mm/4.3in
- Depth-167.70mm/ 6.6in
- HDD Module Removal Clearance 173mm/6.8in
- Cable Installation Clearance (back side) 60mm/2.36in



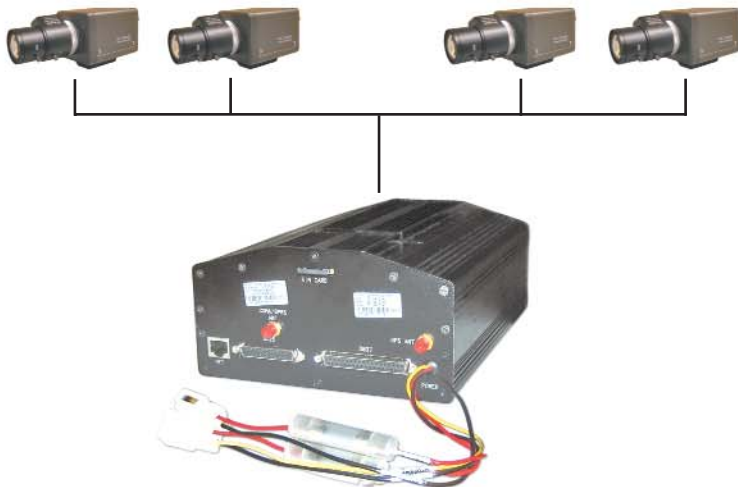
Recorded Security Video Viewing



System Diagram



4 Day/Night Cameras



Mobile Digital Video Recorder



LCD or TV Monitor
(optional)



GPS Antenna



Wireless Bridge
(via cell phone network)



VIDEO AND AUDIO DVR FEATURES AND CAPABILITIES

- 4 channels for video input, full-motion (30fps/camera) continuous video recording and display
- 4 channels for high-fidelity, digitally recorded, synchronized audio matched to 4 video channels
- Continuous recording while in the search mode
- MPEG-4 video compression for high quality, low storage recording and playback
- User-selectable settings for quality and audio record enable/disable for each video channel
- 12v power supply output for multiple devices such as cameras, sensors and other accessories
- Selectable idle frame rate with selectable event-triggered burst recording speeds up to 30fps/cam.
- Multiple alarm inputs with selectable pre-alarm and post-alarm recording
- Full event logging of every operation controlled by the MDVR
- 2 Video output channels for live video and recorded video viewing

STREAMING VIDEO OUTPUT FOR ADVERTISING, ENTERTAINMENT, AND INFORMATION

- DVD-quality steaming audio/video channel with independent NTSC or PAL composite or VGA output
- Convenient Flash card, USB media updating and status file downloading
- Simultaneous and independent operation of DVR and streaming advertising

REMOTE CONNECTION CAPABILITIES

- Handheld Infra-Red controller with OSD for quick access to recorded video and settings menus
- USB connection for file transfer, PC-based file transfer and settings management
- PC-Based client software for playback viewing, management, and file transfer

ACCESSORY MODULES FOR SUPPLEMENTAL DATA AND DRIVER MANAGEMENT

- Video Interface Module including Video text overlay, data capture, GPS location, speed and temperature
- Vehicle Motion Manager includes 3-axis inertia sensor to determine video-matched motion events
- Vehicle Management Software interprets video and data for driver and vehicle use assessment
- Video Event Search software allows intelligent searching of video based on event information



OPTIONAL ACCESSORIES

MODEL	DESCRIPTION
MDVR-DCP	Optional dash mounted panel to display system status, additional USB port and monitor output.
MDVR-WIFI	WIFI 802.11g Wireless module for wireless viewing of video over wireless LAN.
MDVR-CDMA	Built-in CDMA module
MDVR-GPRS	Built-in GPRS module
MDVR-EDGE	Built-in EGDE module
MDVR-INER	Driver Information Module measures 3 angles of vehicle inertia. Alarms at extreme inertia change.
MDVR-LBOX	Lock Box
MDVR-HHC	Extra Remote Handheld Controller
MDVR-VA	Vibration absorber
MDVR-HEAT	Built-in heater



MDVR Removable HDD



NATIONAL SALES OFFICE
 8676 Buffalo Ave
 Niagara Falls, NY, 14304
 Toll Free: 1-866-843-6865
 Local: 212-879-0748
 Fax: 212-879-0482

CANADIAN OFFICE
 351 Ferrier Street, Unit 5
 Markham, ON, L3R 5Z2
 Toll Free: 1-866-843-6865
 Tel: 416-410-6865
 Fax: 1-866-331-3341

Authorized Dealer:

